

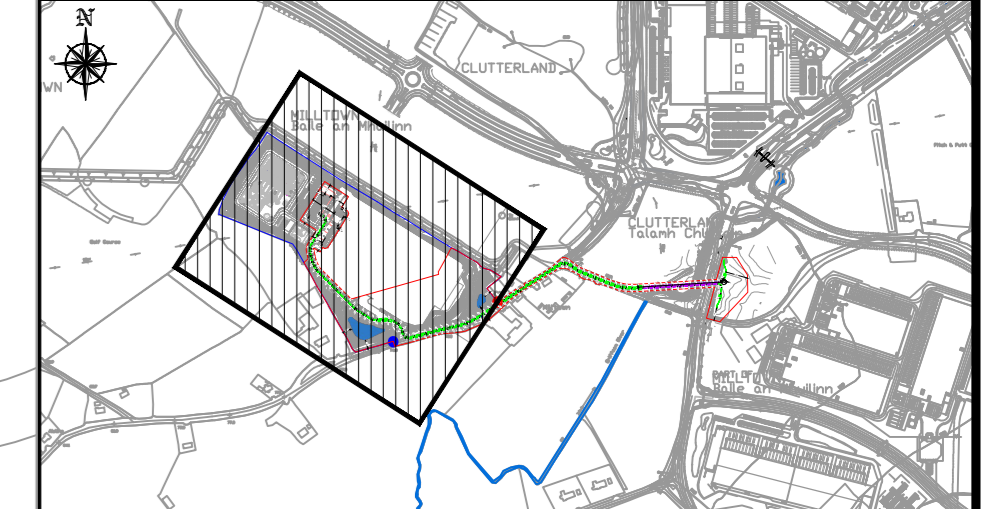
MILLTOWN
Baile an Mhúil

10kV

Tk (Elev)

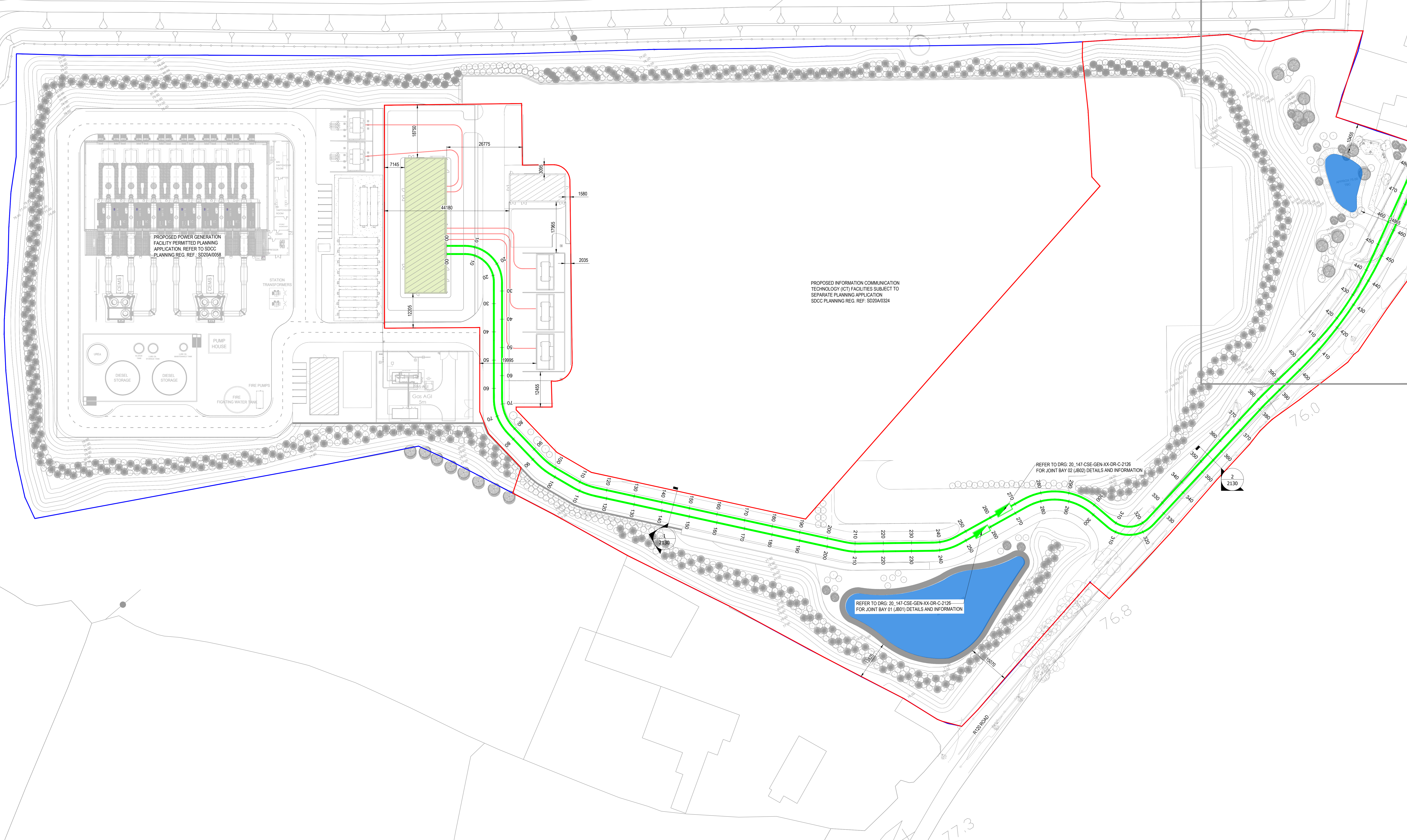
DRAWING IS PRODUCED USING THE IRISH TRANSVERSE MERCATOR (ITM) GEOGRAPHIC COORDINATE SYSTEM

A0



KEYPLAN
N.T.S.

- LEGEND:
- PLANNING BOUNDARY
 - PROPERTY BOUNDARY
 - PROPOSED 110KV GRID CONNECTION
 - PROPOSED HDD (HORIZONTAL DIRECTIONAL DRILL)
 - PROPOSED HV CONDUITS
 - EXISTING GRIFFEEN RIVER



| Rev | Description | Drawn | Checked | Date |
|-----|--------------------|-------|---------|----------|
| P04 | ISSUE FOR PLANNING | DW | LP | 15.03.21 |
| P03 | FOR INFORMATION | DW | LP | 15.03.21 |
| P02 | FOR INFORMATION | DW | LP | 12.03.21 |
| P01 | FOR INFORMATION | DW | LP | 10.03.21 |

Clifton Scannell Emerson Associates
 Consulting Engineers
 Marac House (1st Floor)
 Salses Point, Priory Road
 Sun Loughrea, Co. Dublin
 Ireland. A66 9493

T: +353 1 283 8000
 F: +353 1 283 3466
 E: info@cse.ie
 W: www.cse.ie

DATA & POWER HUB SERVICES LTD
 SERVICES DUE DILIGENCE
 SITE R120
 PROPOSED OSI MAPPING AND GRID
 ROUTE PLAN SHEET 01

Drawn By: DW Date: MAR 2021
 Checked By: RG Scale: 1:500@A0
 Project Code: 20_147 - CSE - GEN - XX - DR - C - 2117

| Status Code | Suitability Description |
|-------------|-------------------------|
| S2 | FOR INFORMATION |
| P04 | PLANNING |